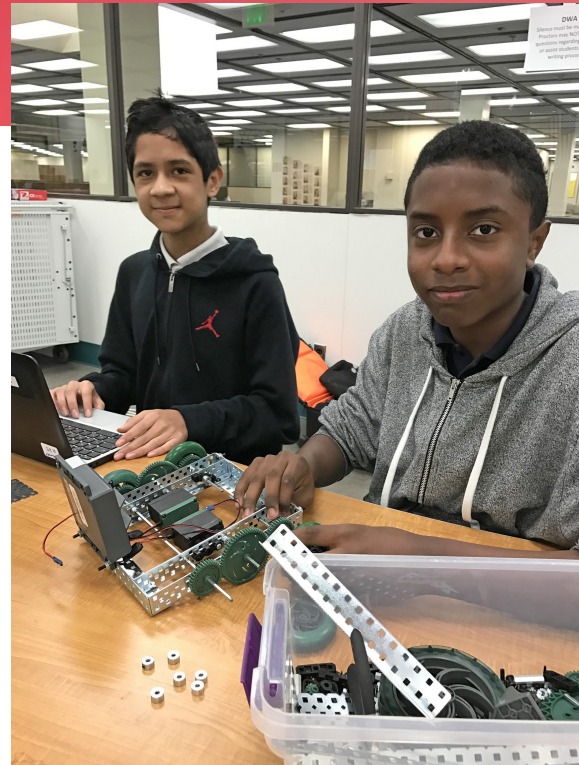


Optimizing How We Teach Children

Hoover Elementary & Sierra Preparatory Academy

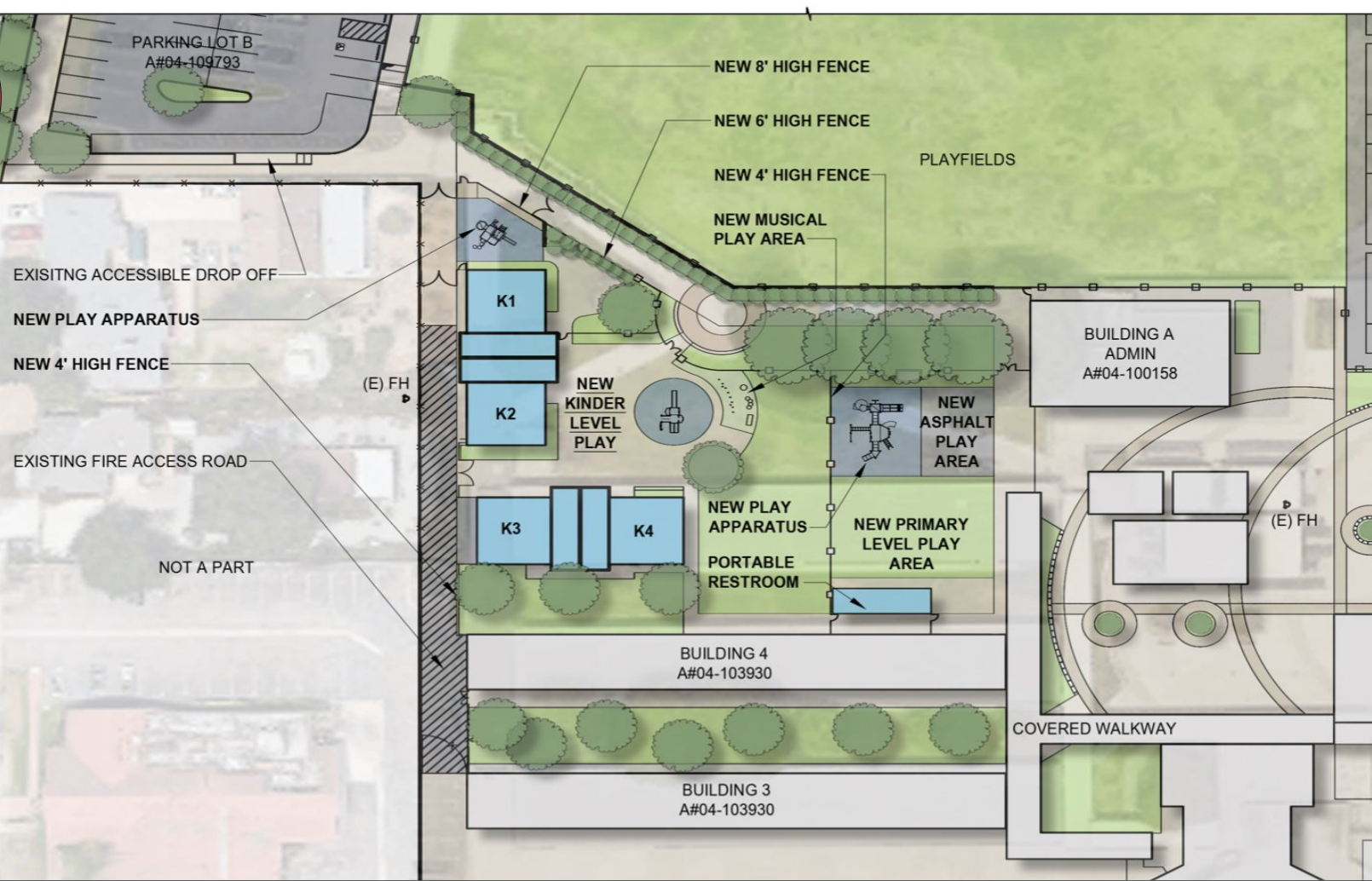




Our Optimization Objectives

Preparing for a Series of Necessary Changes

- Sierra Preparatory Academy and Hoover Elementary **will be combined into one school** community **housed on the Sierra campus** starting in the 2021-22 school year
- Our goal is to create an **enhanced PreK-8 program** and more efficient campus to serve the surrounding neighborhood
- **Transportation** from the Hoover neighborhood to Sierra is a part of this plan
- **New, modern preschool and kindergarten buildings** will be constructed at Sierra to accommodate the changes
- The Hoover campus will be used to grow programs such as the **Advanced Learning Academy - Early College**, bringing new educational choices to the neighborhood

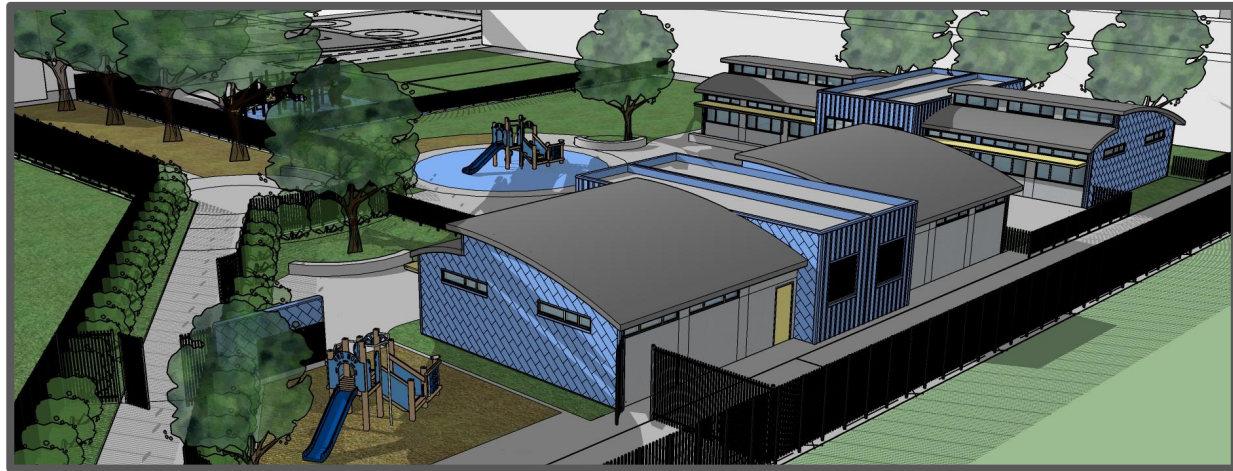




Optimization Opportunities

New Sierra PreK/K Learning Environments

- State-of-the-art New Classrooms
- New playgrounds





Optimization In Other Places

How Other Schools Have Optimized to Serve Children



ROMERO CRUZ ACADEMY: NEW KINDERGARTEN

- Remington → Advanced Learning Academy & Santa Ana College (Program Expansion / SAC Partnership)
- REACH Academy (Certified Buildings)
- Jackson Pre School (Expanded Preschool)
- Romero Cruz Elementary K-5 & Spurgeon Intermediate 6-8 (Improved Programs)



Our Optimization Objectives

How These Changes Will Help Our Students

- Strengthen academic excellence, social and emotional learning, community engagement
- Create stronger, more efficient schools
- Recruit, gain, and retain students
- Create opportunities to enhance our community
- Promote District “Brand” awareness





Optimization Opportunities

The Role of Measure I in Our Efforts

- Improve educational spaces (classrooms, labs, technology, etc.)
- Modernize or replace outdated systems and infrastructure
- Enhance educational opportunities and learning environment for students



EXAMPLE: SANTA ANA HIGH SCHOOL LIBRARY



Optimizing How We Teach Children

Your Feedback is Important



thoughtexchange

Participate by navigating to tejoin.com
and entering the following 9-digit code
based on your school:

➤ Hoover & Sierra:
452-564-787

Optimizing How We Teach Children



Thank You

