

Human Anatomy and Physiology
Fall Final Exam Study Guide

You may use the following guide to prepare your study sheet:

- Be able to use the following words: medial, lateral, superior, inferior, proximal, distal, anterior and posterior

Examples:

The wrist is _____ to the hand.

The sternum is _____ to the spine.

The brain is _____ to the spinal cord.

The stomach is _____ to the lungs.

The thumb is _____ to the fingers.

- Be able to identify diagrams of these tissues (use your tissue project)
Adipose, hyaline cartilage, skeletal muscle, giant multipolar neuron, simple columnar epithelium, dense connective tissue, ciliated epithelium
- Know the function and location of each of the tissues listed above.
- Definition of a tissue.

For the **integumentary** system, know:

- about melanocytes and melanin
- the hypodermis or subcutaneous tissue
- about sebaceous glands and sweat glands
- functions of skin
- skin cancer
- keratinization
- stratum germinativum and stratum corneum
- hair
- arrector pili muscle
- the two layers of the dermis
- burns

For the **skeletal** system, know:

- Parts of the axial skeleton
- Synovial joints
- Types of synovial joints
- Types of fractures
- Yellow and red marrow
- Parts of an osteon
- Foramen magnum
- Ossification
- Functions of the skeleton

For the **nervous** system, know:

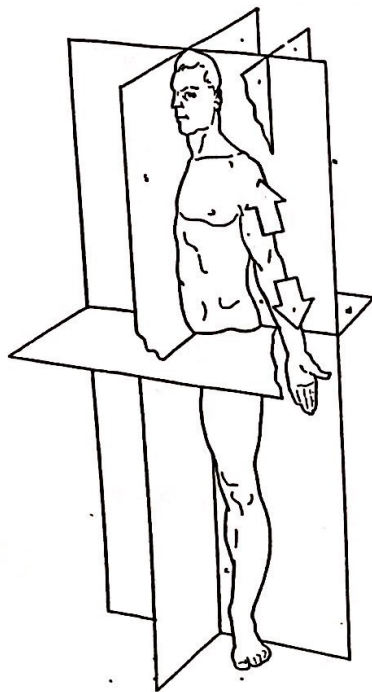
- ✓ about neuroglia
- ✓ about the parts of neurons
- ✓ about depolarization and repolarization
- ✓ the 6 main parts of the brain and their functions
- ✓ the areas of the cortex and their functions
- ✓ the meninges
- ✓ the spinal cord
- ✓ the RAS

For the **special senses**, know:

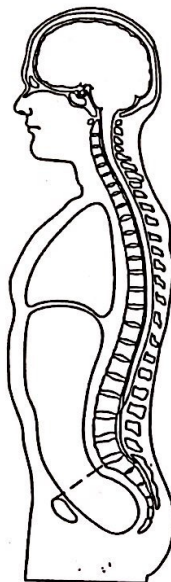
- The parts of a taste bud
- all about the retina and choroid coat
- about the ciliary body and iris
- the fovea centralis and optic disk
- about the ossicles, names and location
- the structure and function of the semicircular canals
- the cochlea
- the tympanic membrane

Human Anatomy and Physiology Final Exam- Diagram Study Guide

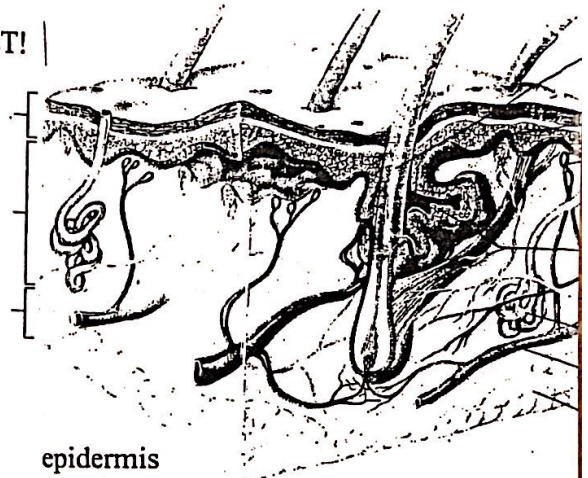
Remember- DON'T PUT THESE ON YOUR STUDY SHEET!



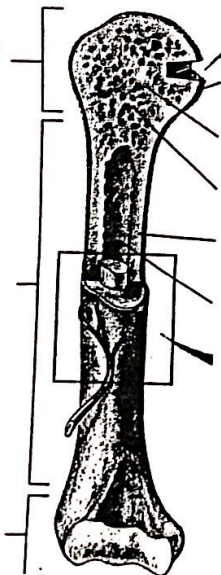
sagittal section
frontal section
transverse section



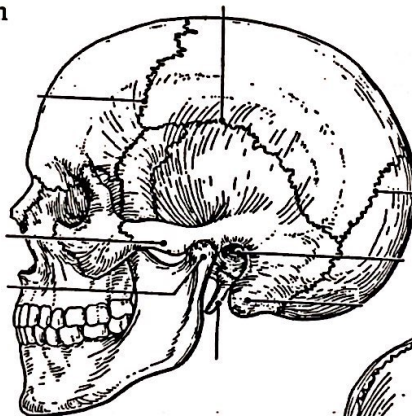
cranial cavity
pelvic cavity
abdominal cavity
thoracic cavity



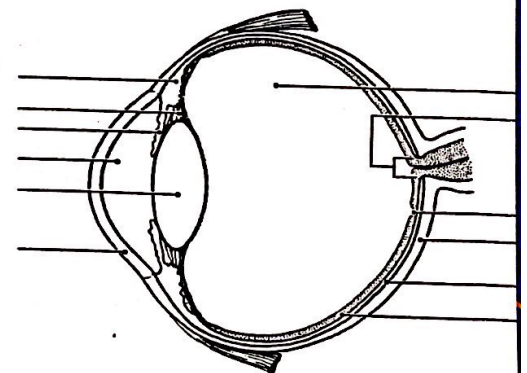
epidermis
dermis
hypodermis
hair follicle
hair shaft
sweat gland
arrector pili
sebaceous gland



spongy bone
yellow marrow
cartilage
compact bone
diaphysis



parietal
temporal
occipital
frontal
maxilla
mandible
zygomatic



cornea
iris
pupil
lens
aqueous humor

