



Santa Ana
Unified School District

2011 STAR and Accountability Update

September 27, 2011

**Dr. Thelma Meléndez de Santa Ana, Ph.D., Superintendent
Cathie Olsky, Ed.D., Deputy Superintendent
Michelle Le Patner, Director, Research and Evaluation**



- State Academic Performance Index (API)
- Federal Adequate Yearly Progress (AYP)
- SAUSD Multi-Year Comparison by subject and grade level





**State Accountability:
Academic Performance Index (API)**

Growth Model with annual growth targets – State goal is 800 (200-1000)

CST, CAPA, CMA and CAHSEE (grades 10-12)

**Federal Accountability:
Adequate Yearly Progress (AYP)**

Status Model with growth target of 100% proficient by 2013-2014

CST, CAPA, CMA and grade 10 CAHSEE



Santa Ana

Unified School District

900 Club
1 school

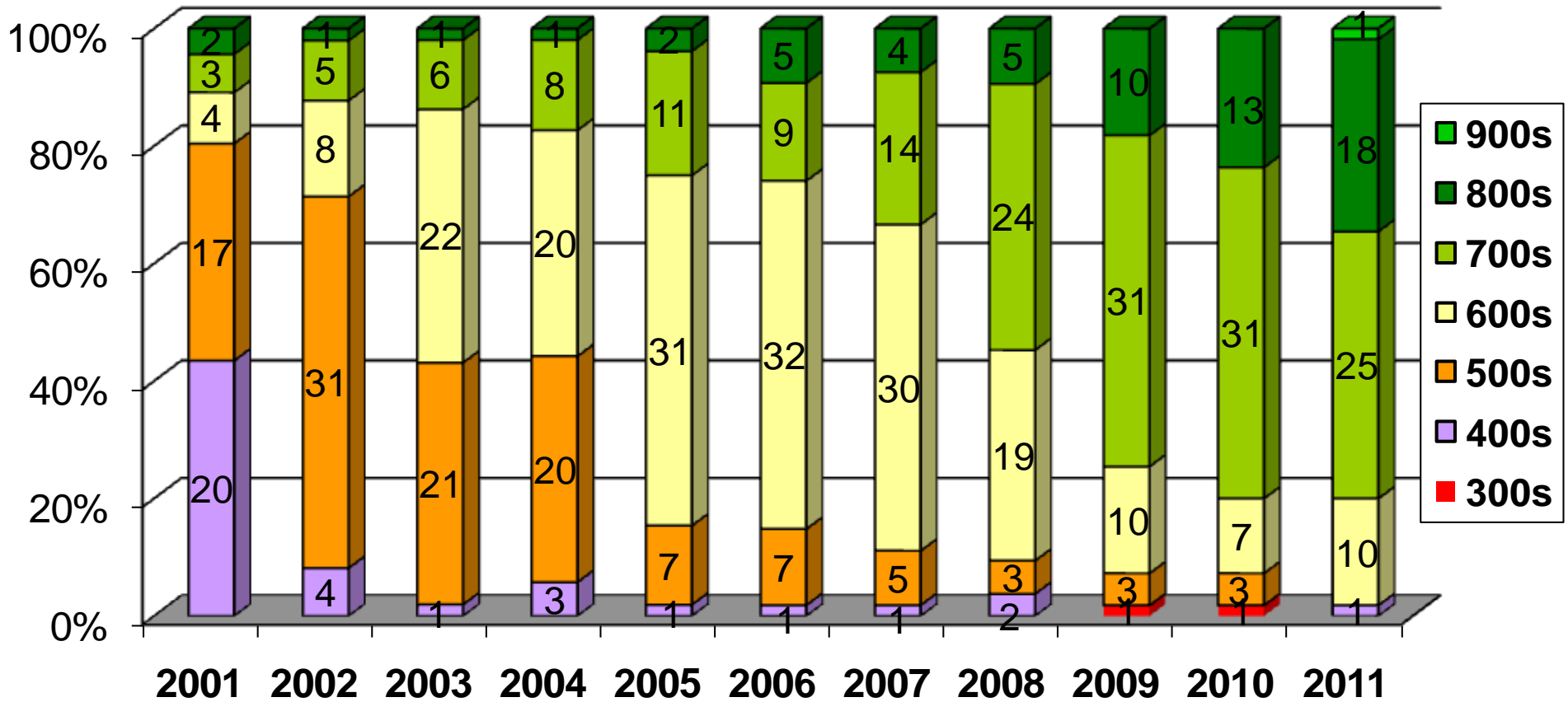
800 Club
18 schools

750 Club
17 schools

700 Club
8 schools

Academic Performance Index (API)

STATE TARGET 800





Santa Ana

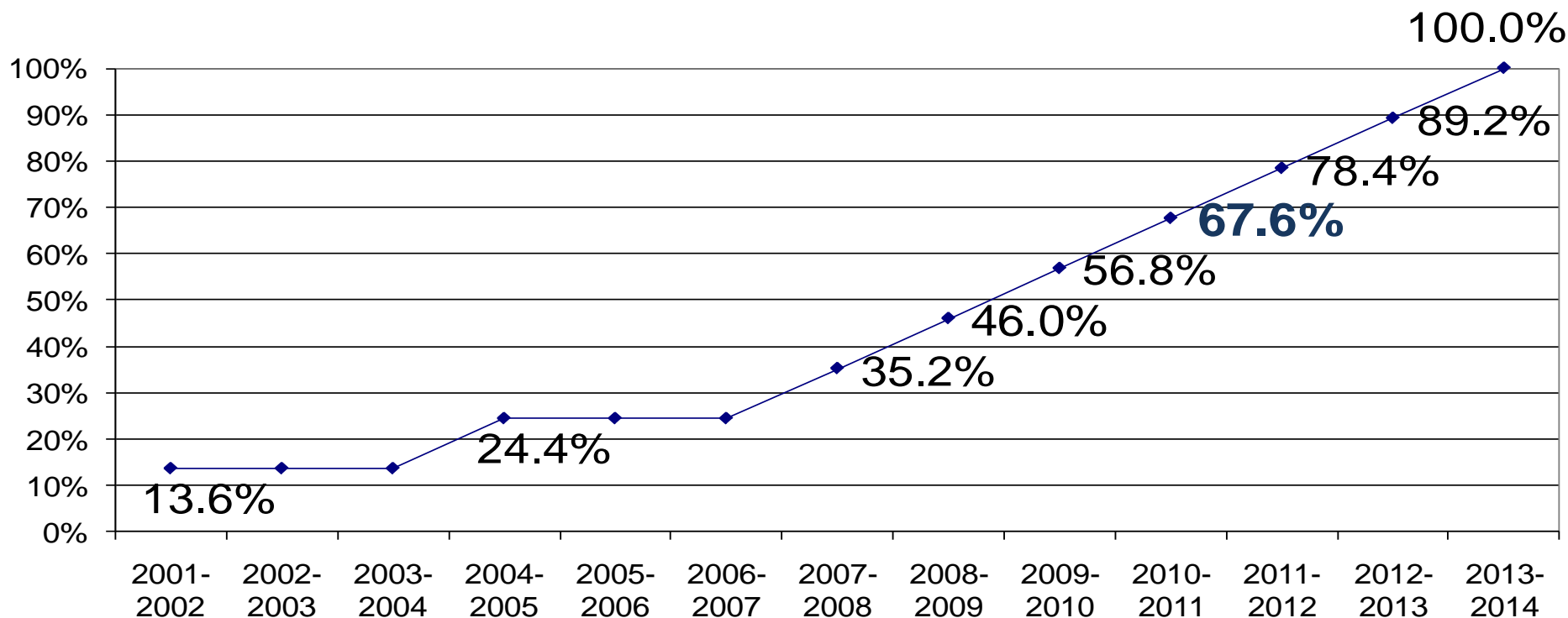
Unified School District

API Growth: 900, 800 & 700 Club

Thorpe	901	Muir	894	Remington	799	Pio Pico	743
		Middle College	889	Sepulveda	799	Walker	737
		Greenville	888	Monte Vista	797	Lowell	732
		Harvey	850	Diamond	796	Lincoln	726
		Madison	849	Jackson	793	Carr	722
		MacArthur	849	Martin	789	Kennedy	714
		Monroe	839	Taft	788	McFadden	711
		Heninger	830	Hoover	780		
		Romero-Cruz	826	Heroes	778		
		Santiago	824	Wilson	778		
		King	822	Jefferson	777		
		Carver	821	Edison	765		
		Mendez	813	Fremont	759		
		Segerstrom	811	Villa	759		
		Esqueda	805	Adams	757		
		Godinez	805	Davis	757		
		Franklin	803	Roosevelt	752		
		Washington	5800	Garfield	747		



Elementary & Middle School ELA Percent Proficient and Advanced



Elementary and Intermediate School Math Target: 68.5% and for 2012 will be 79%.

High School ELA Target: 66.7% and for 2012 will be 77.8%.

High School Math Target: 66.1% and for 2012 will be 77.4%.



ELA - 2011

Mathematics - 2011

Percent Proficient Target: 67.0%

Percent Proficient Target: 67.3%

District	ELA - 2011								Mathematics - 2011							
	District-wide	Hispanic	African Amer	Asian	White	SED	EL	Spec Ed	District-wide	Hispanic	African Amer	Asian	White	SED	EL	Spec Ed
SAUSD	44.3%	43.0%	56.1%	75.9%	67.2%	42.2%	37.0%	32.4%	56.6%	55.6%	57.1%	83.8%	68.7%	54.9%	52.9%	34.4%
	3.8%	4.0%	-5.3%	1.7%	-2.0%	3.9%	4.8%	10.5%	4.4%	4.5%	-3.1%	2.2%	1.3%	4.1%	5.4%	5.3%
Total #	32,062	30,574	132	747	396	28,003	24,872	3,276	32,045	30,560	133	747	396	27,990	24,865	3,282

45 schools made growth in ELA

49 schools made growth in mathematics

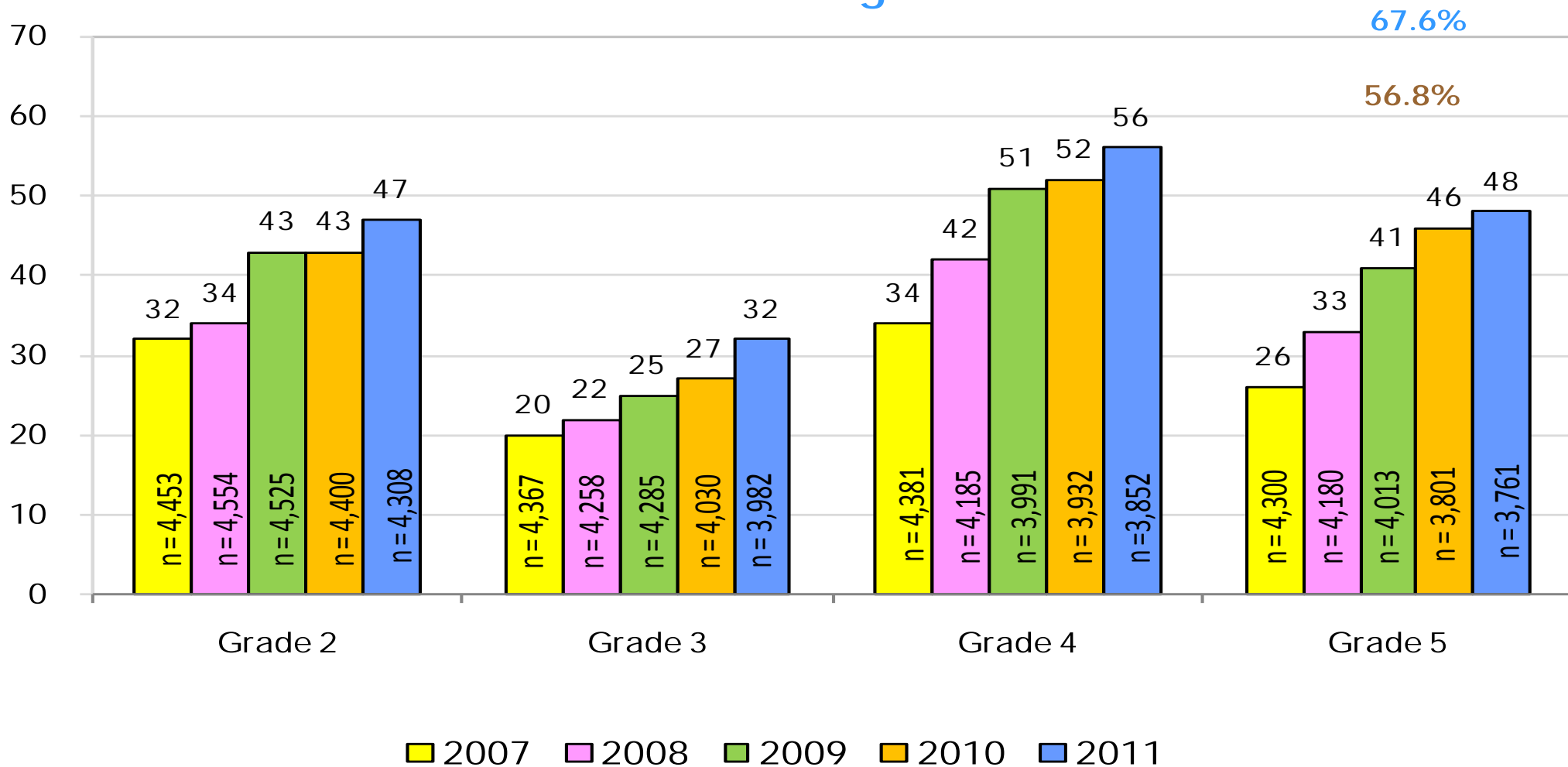


CST - English Language Arts (Grades 2-5)

Five-Year Comparison

2010 NCLB Target: 56.8%

2011 NCLB Target: 67.6%



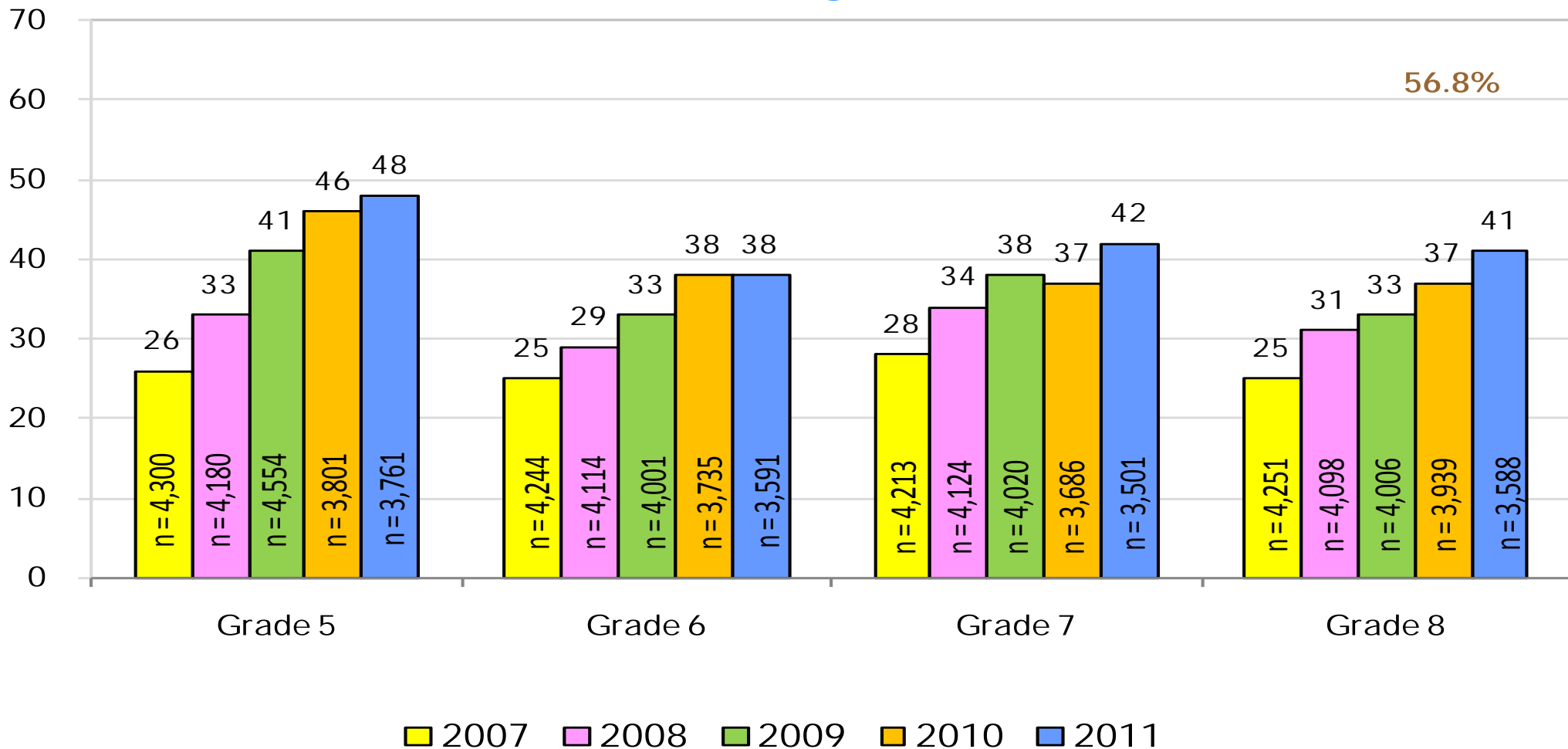


CST - English Language Arts (Grades 5-8)

Five-Year Comparison

2010 NCLB Target: 56.8%

2011 NCLB Target: 67.6%



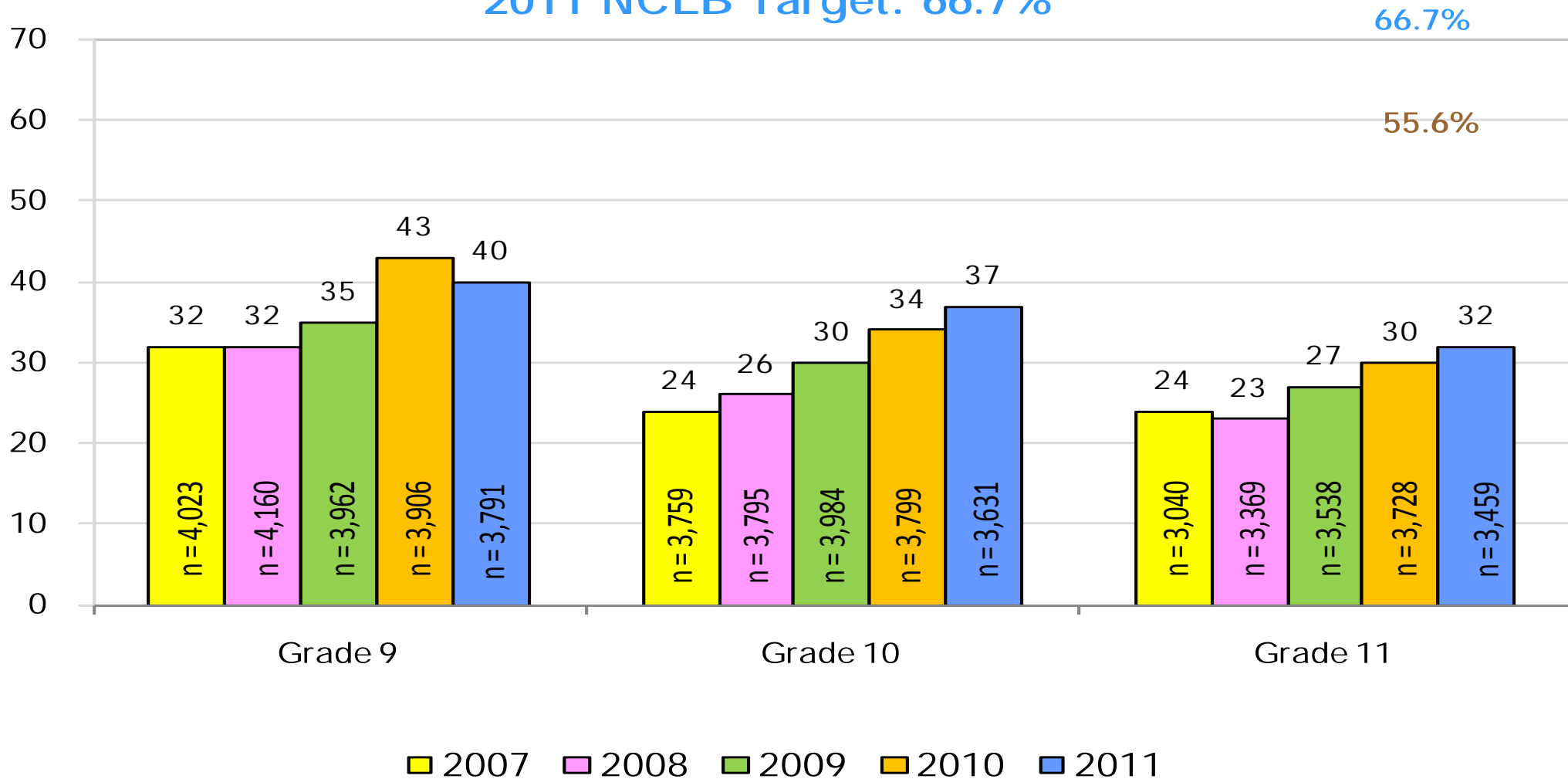


CST - English Language Arts (Grades 9-11)

Five-Year Comparison

2010 NCLB Target: 55.6%

2011 NCLB Target: 66.7%



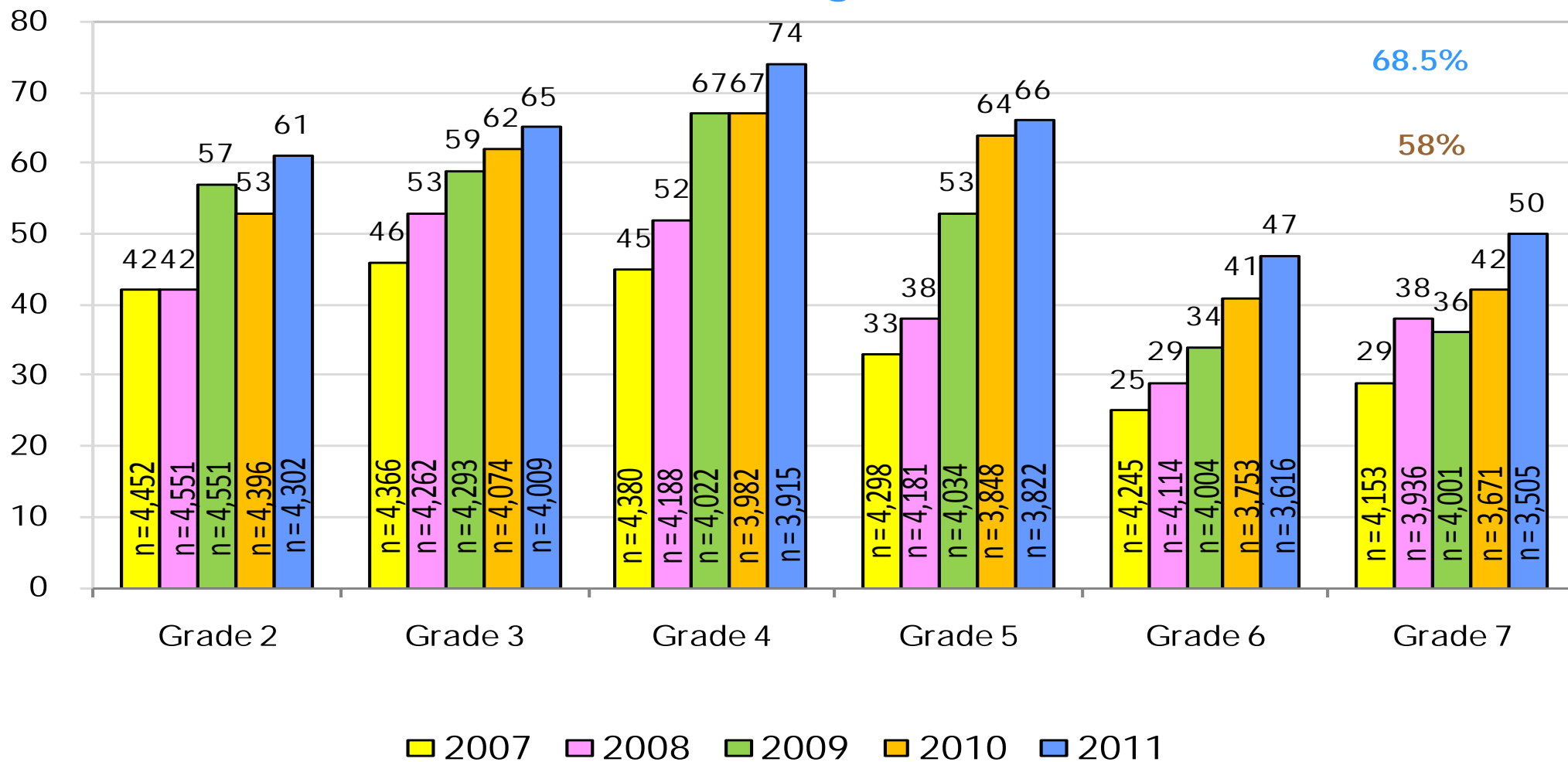


CST - Mathematics (Grades 2-7)

Five-Year Comparison

2010 NCLB Target: 58%

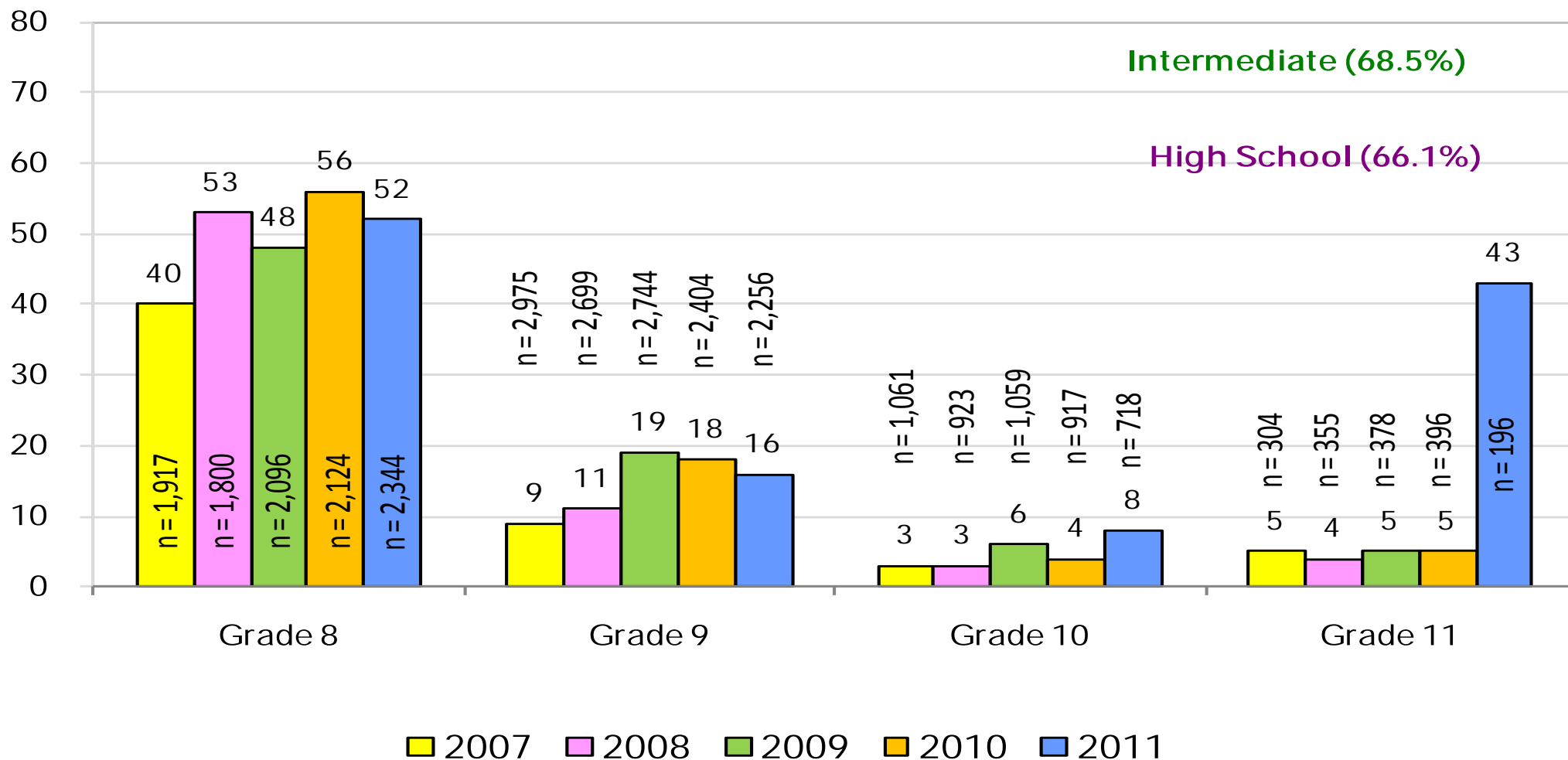
2011 NCLB Target: 68.5%





CST - Algebra I Five-Year Comparison

2010 NCLB Target: 58% (Intermediate), 54.8% High School
 2011 NCLB Target: 68.5% (Intermediate), 66.1% High School





CST - Geometry

Five-Year Comparison

2010 NCLB Target: 54.8%%
2011 NCLB Target: 66.1%

